

HAEBERLE

multifunctional medical
cart systems ...and more

keo[®]

ISO module and functional trolley system
... variable and extraordinary



The system

- a rugged, torsionally stiff sheet metal construction of galvanized, high-quality, coated sheet metal. Resistant to disinfectants, easy to clean and light-resistant. Free of drumming due to single-tray construction. Very low weight!
- 4 elegant, anodised aluminium support profiles for mounting accessories. Subsequent mounting of accessories is also possible.
- an elegant, anodised aluminium push handle is standard.
- all module full-pull-outs are provided with an inset frame suitable for all conventional ISO module baskets. The pull-out is extendable up to approx. 110%, so that the module contents are comfortably and easily removable.
- drawers are also equipped with full-pull-outs (110%).
- inset frames and drawers with ball bearing telescopic guidance with self pull-in for easy gliding and comfortable use.
- high-quality, 125 mm Ø, smoothly-running castors with 2 brakes and with wall guards are standard. Electrically conductive castors are available at an additional price.
- total load of the trolleys up to approx. 130 kg.

The modern, mobile trolley series with infinite version possibilities and clean lines with colourful accents is ergonomic, perfected suited to its function and practical for many treatment applications. The thoroughly thought-out, practice-orientated organisational system offers free work space.

keo® with roller blinds, drawers or module full-pull-outs, in different heights and colours ... keo® adapts optimally to your equipment wishes and your modern ambience.

Flexible module support walls make it possible to accommodate ISO module baskets of all conventional brands – even at a later date.

keo® fulfills its function as ISO module trolley, anaesthetic trolley, dressing and treatment trolley, emergency trolley ...and more

The dimensions

Width: (incl. castors and wall guards)	761 mm
Depth: (incl. castors and wall guards)	580 mm
Case height: (incl. castors, without work surface)	913/1041/1169/1451 mm
Overall width: (incl. 1 push handle and wall guards)	810 mm

The colours

In your order please specify the colour code by adding it as the last digit to the reference number.

Possible combinations

- xxxx**1** = Trolley grey white, handles and decorative strips grey
- xxxx**2** = Trolley grey white, handles and decorative strips blue
- xxxx**3** = Trolley grey white, handles and decorative strips red violet
- xxxx**4** = Trolley grey white, handles and decorative strips yellow
- xxxx**5** = Trolley grey white, handles and decorative strips turquoise
- xxxx**6** = Trolley night blue, handles white aluminium, decorative strips and night-blue
- xxxx**7** = Trolley white aluminium, handles and decorative strips grey

Other colour combinations on request.

Colour samples

grey white ≙ RAL 9002
 night blue ≙ RAL 5022
 white aluminium ≙ RAL 9006

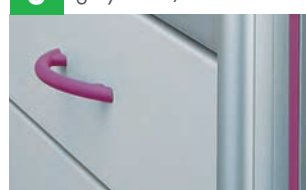
1 grey white/grey



2 grey white/blue



3 grey white/red violet



4 grey white/yellow



5 grey white/turquoise



6 night blue/white aluminium



7 white aluminium/grey



trolleys

ISO module trolleys

are suitable for all conventional ISO module systems. You can choose between the comfortable module full-pull-out frames which can be extended to 110% or module support walls. The modules are not included in the trolleys recommended here. You can use your own stocks or purchase modules from us.



ISO module trolley V
▶ Ref. no. 18555



ISO module trolley VI
▶ Ref. no. 18561



Example: module trolley
with ISO modules, grey ABS plastic
3 different heights

Trolleys with metal drawers

have space for all the necessary equipment. ABS-plastic work surface with a four-sided raised edge with insertion stainless steel plate. Matching drawer insets with variable partitions, please find in the [keo](#) price list.



Treatment trolley II
▶ Ref. no. 18387



Treatment trolley I
▶ Ref. no. 18327



Anaesthetic trolley II
▶ Ref. no. 18603

ISO module dressing and treatment trolleys

create free space to work. The organisation system enables you to compactly store all common material packages, leaving you more space to work. The intelligently shaped work surface with the easy-clean rounded corners makes work a pleasure. Consoles, dispensers and many other accessories which can be easily and quickly added complete this range.



Dressing and treatment trolley IV
▶ Ref. no. 18651



Dressing and treatment trolley III
▶ Ref. no. 18641



Dressing and treatment trolley VII
▶ Ref. no. 18817



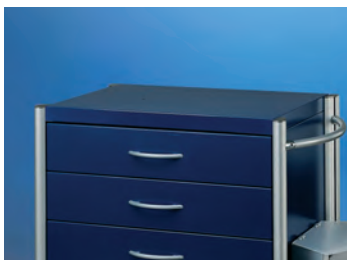
ABS plastic work surface
with raised edges on 4 sides
► Ref. no. 18097



Pull-out plate
included work surface
with raised edges on 4 sides
► Ref. no. 1846□



Panel board, stainless steel
for work surface
► Ref. no. 18128



Metal plate
powder-coated, midnight blue
► Ref. no. 18093



**Metal plate
with side extension**
in special color, powder coated
► Ref. no. 1807□



Work surface, stainless steel
with a beaded edge
► Ref. no. 18095



Module full-pull-out
(without ISO module)
► Ref. no. 1844□ (61 mm high)
► Ref. no. 1814□ (125 mm high)
► Ref. no. 1815□ (250 mm high)



Drawer with full-pull-out
► Ref. no. 1812□ (125 mm high)
► Ref. no. 1813□ (250 mm high)



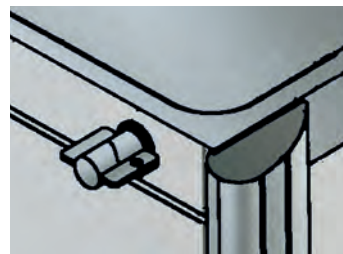
4 castors
Ø 125 mm, electrically conductive
with wall guards and 2 with brakes
► Ref. no. 18064



Roller blind with lock
► Ref. no. 18434
(keo 898 mm high)
► Ref. no. 18439
(keo 1154 mm high)
► Ref. no. 18429
(keo 1154 mm high)
mit 1 Auszug/Schublade



ISO module support walls
(without ISO modules)
► Ref. no. 18844
(for 4 modules)
► Ref. no. 18845
(for 5 modules)
► Ref. no. 18846
(for 6 modules)



Anti-tamper seal
(for several pull-outs)
► Ref. no. 18432

(for one pull-out)
► Ref. no. 17797

If you have individual needs or the trolley is to be used for a specific purpose, you can set up your own trolley with many different keo system parts. We also like to advise you.

Here are some examples of individual function trolleys.

Using the various system parts and accessories you can create your own special trolley model customized to your requirements. Ask us. We will be happy to advise you!



► **Ref. no. 18857**
with 2 module full-pull-outs 61 and 2 module full-pull-outs 250, extendable module for notebook and injection set PicBox®



► **Ref. no. 1881** □
with stainless steel work surface, metal drawers and organisation system with 2 deposit levels + special colour green



► **Ref. no. 1882** □
with different dispensers, extendable pull-out plate, standard profile rail and emergency accessories + special colour white



► **Ref. no. 1883** □
with module full-pull-outs 61/125/250 mm high, pull-out plate, dispensers and various accessories + special colour safran



► **Ref. no. 1886** □
with work surface of stainless steel and 14 module full-pull-outs 61 + special colour orange



► **Ref. no. 1887** □
with work surface of stainless steel, 7 drawers and pull-out plate + special colour yellow



► **Ref. no. 1899** □
with metal drawers, waste collector Piccolo, waste container for instruments and soap dispenser + special colour red

RAL colours

Choose you favourite colour for your **keo** for a low extra charge.





Waste collector with knee operation

- ▶ Ref. no. 18358 (capacity 8 Ltrs.)
- ▶ Ref. no. 18359 (capacity 20 Ltrs.)



Organisation system

- with 2 tilted deposit levels
- ▶ Ref. no. 17836



Injection set PicBox®

- with 5 small and 3 big boxes
- ▶ Ref. no. 18006



Organisation system with PicBox®

- ▶ Ref.Nr. 17991



Soap and disinfectant dispenser

- ▶ Ref. no. 17850 (capacity 1 ltrs.)



Infusion bottle holder

- chromium-plated for plugging into the profile column
- ▶ Ref. no. 18020



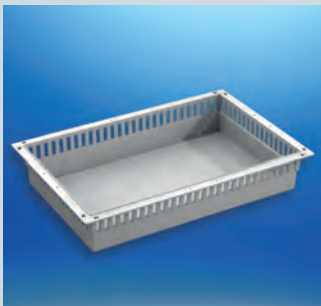
Standard profile rail

- made of stainless steel, mounted sidewise
- ▶ Ref. no. 17943



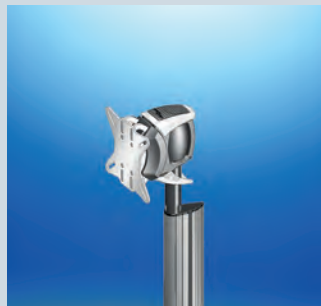
Holder for oxygen bottles 5/10 Ltrs.

- ▶ Ref. no. 18168



ISO module in 3 sizes

- ▶ Ref. no. 18898 (600 x 400 x 50 mm)
- ▶ Ref. no. 18896 (600 x 400 x 100 mm)
- ▶ Ref. no. 18897 (600 x 400 x 200 mm)



alegro monitor holder

- on tightly adjusted column
- ▶ Ref. no. 25017



alegro monitor holder on swivel arm

- with 2 hinge joints and integrated cable duct
- ▶ Ref. no. 25022



alegro holder for double monitoring

- on aluminum traverse between the carrier columns
- ▶ Ref. no. 25016

Additional system parts and accessories you will find in the **keo** price list.



Your medical distributor

HAEBERLE GmbH + Co. KG
multifunctional medical
cart systems ...and more

Breitwiesenstr. 13
DE-70565 Stuttgart
P.O.Box 800524 · DE-70505 Stuttgart
Phone +49 (0) 7 11/7 83 14-0
Fax +49 (0) 7 11/7 83 14-77
Email: info@haeberle-med.de
Internet: www.haerberle-med.de