

ATMOS® C 451
ATMOS® C 361

The standard in OT suction!

Top performance at a fair price.



ATMOS® C 451

The standard in OT suction!

The innovation of the ATMOS® C 451 lies in the details:
With the innovative DDS (Direct Docking System) it is simple to disconnect canister, filter and suction hose from the suction unit - and when using the DDS canister system - can be sterilised and used again. And all this within shortest time!

In addition errors in hose connection are completely ruled out. At the same time it is possible to conveniently select the canisters by means of a changeover lever.



ATMOS® C 361

The cost-effective solution!

For suction procedures with less power requirements the ATMOS® C 361 is most suitable:

- Suction pump with at least 36 l/min, max. -91 kPa
- Operation without foot switch
- With trolley

Apart from that you can benefit from the same advantage as the ATMOS® C 451.
Decide for yourself!





Characteristics

	ATMOS® C 451 with system trolley	ATMOS® C 451 table-top device
		
Suction pump 45 l	■	■
Suction pump 36 l	□	□
Single-canister system	□	■
Double-canister system	■	□
ATMOS DDS (1.5 l, 3 l)	■	■
Foot controller / switch	■	■
Antistatic castors	■	□
Precision vacuum gauge	■	■
Carrying handle and container lid	■	■
Changeover lever	■	□
Infinitely variable vacuum control	■	■

■ = Standard version

□ = not available

	ATMOS® C 361 with trolley	ATMOS® C 361 table-top device
		
Suction pump 45 l	<input type="checkbox"/>	<input type="checkbox"/>
Suction pump 36 l	<input checked="" type="checkbox"/>	<input checked="" type="checkbox"/>
Single-canister system	<input type="checkbox"/>	<input checked="" type="checkbox"/>
Double-canister system	<input type="checkbox"/>	<input type="checkbox"/>
ATMOS DDS (1.5 l, 3 l)	<input checked="" type="checkbox"/>	<input checked="" type="checkbox"/>
Foot controller / switch	<input type="checkbox"/>	<input type="checkbox"/>
Antistatic castors	<input checked="" type="checkbox"/>	<input type="checkbox"/>
Precision vacuum gauge	<input checked="" type="checkbox"/>	<input checked="" type="checkbox"/>
Carrying handle and container lid	<input checked="" type="checkbox"/>	<input checked="" type="checkbox"/>
Changeover lever	<input type="checkbox"/>	<input type="checkbox"/>
Infinitely variable vacuum control	<input checked="" type="checkbox"/>	<input checked="" type="checkbox"/>

■ = Standard version

□ = not available

ATMOS® C 451

ATMOS® C 451	REF
<p>1 Powerful surgical suction unit for high requirements. Designed for continuous operation, silent running, quick-mount mechanism for connection to system trolley without the use of tools, two vacuum attachments, easy to clean surfaces with additional protection against the penetration of liquids, integrated extra-large precision-vacuum indication, loss-free, infinitely variable ball-shaped vacuum regulator. DDS system for hose-free coupling of the pump to the DDS canister.</p> <p>Technical data: Vacuum 0 up to -91 kPa/-682 mmHg, pump performance: 45 l/min +3/-5 l/min, 230 V~, ± 10%, 50/60 Hz, dimensions (H x W x D): 330 x 240 x 360 mm <i>Included in delivery:</i> <i>basic unit, mains cable, operating instructions</i></p>	340.0300.0
ATMOS® C 451 100 V~	340.0300.1
ATMOS® C 451 115 V~	340.0300.2
ATMOS® C 451 127 V~	340.0300.3
<p>2 ATMOS® C 451 portable with standard rail</p>	340.0357.0



1 REF 340.0300.0



2 REF 340.0357.0

ATMOS® C 451

ATMOS® C 451 - fahrbar		REF
<p>1 ATMOS® C 451 with 2 x 3 l canister Powerful surgical suction unit for high demands Designed for continuous operation, silent running, quick-mount mechanism for connection to system trolley without the use of tools, two vacuum attachments, easy to clean surfaces with additional protection against the penetration of liquids, integrated extra-large precision-vacuum indication, loss-free, infinitely variable ball-shaped vacuum regulator. DDS system for hose-free coupling of the pump to the DDS canister. <i>Included in delivery:</i> basic unit, mains cable, operating instructions, 2 DDS canisters 3 l, 2 DDS canister lids, 2 DDS canister handles, 2 DDS splash protections, 10 DDS-bacterial filters with integrated oversuction stop, DDS hose adapter set (Ø 6 mm / Ø 10 mm), DDS hose holder on canister, DDS changeover docking station, system trolley, suction hose Ø = 6 mm, L = 2.10 m, standard rail adapter</p>		340.0334.0
<p>2 ATMOS® C 451 with 2 x 5 l canister <i>Included in delivery:</i> basic unit, mains cable, operating instructions, 2 DDS canisters 5 l, 2 DDS canister lids, 2 DDS canister handles, 2 DDS splash protections, 10 DDS-bacterial filters with integrated oversuction stop, DDS hose adapter set (Ø 6 mm / Ø 10 mm), DDS hose holder on canister, DDS changeover docking station, system trolley, suction hose Ø = 6 mm, L = 2.10 m, standard rail adapter</p>		340.0333.0
<p>3 ATMOS® C 451 mobile with standard rail Designed for continuous operation, silent running, quick mount mechanism connection to system trolley without the use of tools, two vacuum attachments, easy to clean surfaces with additional protection against penetration of liquids, integrated extra large precision vacuum indication loss-free infinitely variable ballshaped vacuum regulator. <i>Included in delivery:</i> Basic device, system trolley, mains cable, suction hose l = 2.1 m, standard rail set</p>		340.0358.0
ATMOS® C 451 - portable		REF
<p>4 ATMOS® C 451 with practice package 1.5 l <i>Included in delivery:</i> basic unit, mains cable, operating instructions, DDS canister 1.5 l, DDS canister lid, DDS canister handle, DDS splash protection, 10 DDS-bacterial filters with integrated oversuction stop, DDS hose adapter set (Ø 6 mm / Ø 10 mm), DDS hose holder on canister, suction hose Ø = 6 mm, L = 2.10 m</p>		340.0339.0
<p>5 ATMOS® C 451 with practice package 3 l <i>Included in delivery:</i> basic unit, mains cable, operating instructions, DDS canister 3 l, DDS canister lid, DDS canister handle, DDS splash protection, 10 DDS-bacterial filter with integrated oversuction stop, DDS hose adapter set (Ø 6 mm / Ø 10 mm), DDS hose holder on canister, suction hose Ø = 6 mm, L = 2.10 m</p>		340.0338.0



1 REF 340.0334.0



2 REF 340.0333.0



3 REF 340.03580



4 REF 340.0339.0



5 REF 340.0338.0

ATMOS® C 361

ATMOS® C 361 - portable		REF
<p>1 ATMOS® C 361 with practice package 1.5 l Powerful surgical suction unit for high demands. Designed for continuous operation, silent running, quick-mount mechanism for connection to system trolley without the use of tools, two vacuum attachments, easy to clean surfaces with additional protection against the penetration of liquids, integrated extra-large precision-vacuum indication, loss-free, infinitely variable ballshaped vacuum regulator. DDS system for hose-free coupling of the pump to the DDS canister. <i>Included in delivery:</i> basic unit, mains cable, operating instructions, DDS canister 1.5 l, DDS canister lid, DDS canister handle, DDS splash protection, DDS bacterial filter with integrated oversuction stop, DDS hose adapter set (Ø 6 mm / Ø 10 mm), DDS hose holder on canister, suction hose Ø = 6 mm, L = 2.10 m</p>		340.0351.0
<p>2 ATMOS® C 361 with practice package 3 l <i>Included in delivery:</i> basic unit, mains cable, operating instructions, DDS canister 3 l, DDS canister lid, DDS canister handle, DDS splash protection, DDS bacterial filter with integrated oversuction stop, DDS hose adapter set (Ø 6 mm / Ø 10 mm), DDS hose holder on canister, suction hose Ø = 6 mm, L = 2.10 m</p>		340.0350.0
<p>3 ATMOS® C 361 portable with standard rail <i>Included in delivery:</i> Basic device, system trolley, mains cable, suction hose l = 2.1 m, adapter for standard rail system</p>		340.0363.0
ATMOS® C 361 - mobile		REF
<p>4 ATMOS® C 361 mobile with 1.5 l practice package <i>Included in delivery:</i> Basic device, system trolley, mains cable, operating instructions, DDS canister 1.5 l, DDS canister lid, DDS canister carrying handle, DDS splash protection, 10 DDS bacterial filter with integrated overflow protection, DDS hose adapter set, DDS hose holder, suction hose l = 2.1 m</p>		340.0360.0
<p>5 ATMOS® C 361 mobile with 3.0 l practice package <i>Included in delivery:</i> Basic device, system trolley, mains cable, operating instructions, DDS canister 3.0 l, DDS canister lid, DDS canister carrying handle, DDS splash protection, 10 DDS bacterial filter with integrated overflow protection, DDS hose adapter set, DDS hose holder, suction hose l = 2.1 m</p>		340.0361.0
<p>6 ATMOS® C 361 mobile with standard rail Designed for continuous operation, silent running, quick mount mechanism for connection to system trolley without the use of tools, two vacuum attachments, easy to clean surfaces with additional protection against the penetration of liquids, integrated extra large precision vacuum indication, loss-free infinitely variable ball-shaped vacuum regulator. <i>Included in delivery:</i> Basic device, system trolley, mains cable, suction hose l = 2.1 m</p>		340.0362.0



1 REF 340.0351.0



2 REF 340.0350.0



3 REF 340.0363.0



4 REF 340.0360.0



5 REF 340.0361.0



6 REF 340.0362.0

Accessories

Accessories ATMOS® C 451		REF
1	Foot switch	443.0755.0
2	Pedal regulator (0...-91 kPa) for infinitely variable vacuum regulation, especially with vacuum extraction, liposuction etc. (can also be retrofitted)	443.0310.1
Accessories ATMOS® C 451 and ATMOS® C 361		REF
3	Tray for system trolley	340.0084.0
4	Trolley with standard rail	320.0070.1
5	System trolley	340.0070.0



1 REF 443.0310.1



2 REF 443.0755.0



3 REF 340.0084.0



4 REF 320.0070.1



5 REF 340.0070.0

DDS

Accessories	REF
1 DDS adapter for tissue collector connects the ATMOS DDS canister to the tissue collector	340.0062.0
2 DDS-standard rail adapter with vacuum connection for the use of disposable systems at the unit	340.0059.0
3 DDS-secretion canister, plastic, 1.5 l, autoclavable Height 146 mm, external Ø 166 mm	340.0050.0
4 DDS-secretion canister, plastic, 3 l, autoclavable Height 247 mm, external Ø 166 mm	340.0051.0
5 DDS-secretion canister, plastic, 5 l, autoclavable Height 396 mm, external Ø 166 mm	340.0052.0



1 REF 340.0062.0



2 REF 340.0059.0



3 REF 340.0050.0



4 REF 340.0051.0



5 REF 340.0052.0

DDS

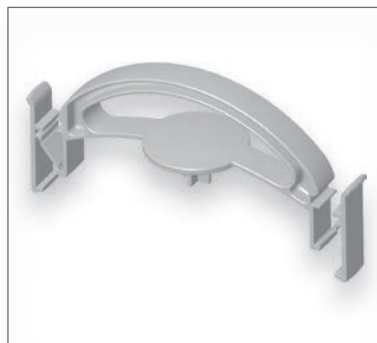
Accessories		REF
1	DDS-canister lid, complete set consisting of: DDS canister lid, DDS canister handle, DDS splash protection, DDS hose adapter set, Ø 6 mm + Ø 10 mm, DDS bacterial filter / oversuction stop, hose holder on DDS canister.	340.0040.0
2	DDS-canister lid with gaskets	340.0053.0
3	DDS-canister handle, grey	340.0055.0
4	Canister handle, blue	340.0326.0
5	DDS-splash protection, silicone	340.0056.0
6	DDS-hose adapter set, Ø 6 mm + Ø 10 mm	340.0057.0
7	Single-Docking-Station (SDS) Single-docking-station enables the use of DDS-canisters in connection with ZV / ZD systems. Attention: please order canister with lid separately!	320.0640.0
8	DDS-hose holder	340.0066.0
Consumables		REF
9	Bacterial filter for DDS secretion canister, 10 pcs. disposable, not autoclavable, Change: daily, with same patient: ca. every 14 days	340.0054.0



1 REF 340.0040.0



2 REF 340.0053.0



3 REF 340.0055.0



4 REF 340.0326.0



5 REF 340.0056.0



6 REF 340.0057.0



7 REF 320.0640.0



8 REF 340.0066.0



9 REF 340.0054.0

Receptal®

Accessories		REF
1	Receptal® canister 1,5 l	310.0221.0
2	Receptal® canister 2 l	443.0256.0
3	Receptal® canister 3 l	444.0157.0
4	Receptal® package 2 x 1.5 l consisting of: 2 Receptal®-holder for 1 canister, 2 canisters for Receptal®-suction bags 1.5 l, 2 Receptal®-suction bags 1.5 l, one of them with integrated overflow valve filter, connection hose, L = 12 cm Basic unit must be ordered separately!	444.0027.0
5	Receptal® package 1 x 2 l consisting of: 1 Receptal®-holder for 1 canister, 1 canisters for Receptal®-suction bags 2 l, 1 Receptal®-suction bags 2 l with integrated overflow valve filter Basic unit must be ordered separately!	444.0030.0
6	Receptal® package 2 x 2 l	444.0028.0
7	Receptal® package 1 x 3 l	444.0031.0
8	Receptal® package 2 x 3 l	444.0029.0
Consumables		REF
9	Receptal® suction bag 1.5 l, not autoclavable, 50 pcs.	310.0222.2
10	Receptal® disposable bag 2 l, without integrated overflow protection Not autoclavable, 50 pcs., change: 1 x per patient	443.0257.0
	Receptal® suction bag 2 l, with integrated overflow protection Not autoclavable, 50 pcs., change: 1 x per patient	443.0257.2
11	Receptal® suction bag 3 l, without integrated overflow protection For tandem hose system, not autoclavable, 50 pcs., change: 1 x per patient.	444.0153.0
	Receptal® suction bag 3 l, with integrated overflow protection Not autoclavable, 50 pcs., change: 1 x per patient.	444.0154.0



1 REF 310.0221.0



2 REF 443.0256.0



3 REF 444.0157.0



4 REF 444.0027.0



5 REF 444.0030.0



6 REF 444.0028.0



7 REF 444.0031.0



8 REF 444.0029.0



9 REF 310.0222.2



10 REF 443.0257.0



11 REF 444.0153.0

Serres® & MediVac®

Accessories Serres®		REF
1	Serres® external canister 1 l	312.0465.0
2	Serres® suction bag, 1 l, not autoclavable, 36 pcs. with angled connection	312.0466.0
3	Serres® canister 2 l	310.0402.0
4	Serres® suction bag 2 l with gelling agent Nicht autoklavierbar, 22 St.	310.0400.0
5	Serres® canister 3 l	310.0403.0
6	Serres® suction bag 3 l with gelling agent not autoclavable, 20 pcs.	310.0401.0
7	Serres® dev. holder	340.0095.0
Accessories MediVac®		REF
8	Medi-Vac® canister 1 l	312.0473.0
9	Standard rail support For disposable system Medi-Vac® 1 l, 1.5 l	444.0451.0
Consumables MediVac®		REF
10	Medi-Vac® suction bag 1 l, not autoclavable, 50 pcs.	312.0474.0



1 REF 310.0400.0



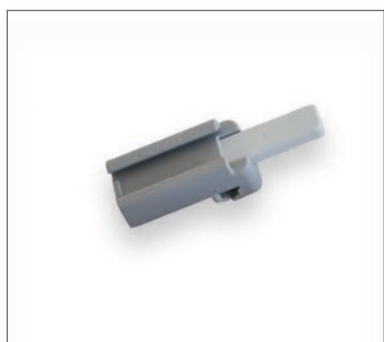
2 REF 312.0466.0



3 REF 310.0401.0



4 REF 312.0465.0



7 REF 340.0095.0



5 REF 310.0402.0



6 REF 310.0403.0



8 REF 312.0473.0



9 REF 444.0451.0



10 REF 312.0474.0

General consumables

General consumables		REF
1	Suction hose, silicone, Ø 6 mm, L = 2 m, 1 pc Autoclavable at 134 °C, change: after 20 x autoclaving	000.0361.0
2	Suction hose, silicone, Ø 10 mm, L = 2 m, 1 pc Autoclavable at 134 °C, change: after 20 x autoclaving	000.0243.0
3	Suction hose, disposable, Ø 6 mm, L = 2.10 m, 50 pcs. Change: 1 x per patient	006.0059.0
4	Bacterial filter disposable, not autoclavable, change: 1 x per patient	443.0738.0
5	Bacterial filter FFG - hydrophobic	444.0082.0
6	Bacterial filter disposable, not autoclavable, Change: 1 x per patient	444.0628.0
7	Tissue collector 300 ml, disposable Ø 6 mm, change: 1 x per patient	340.0061.0
8	Collector sieve, disposable 50 ml, change: 1 x per patient	401.0555.0
9	Secretion canister lid incl. standard rail holder	444.0650.0
10	Socket nipple set consisting of: Double socket nipple, hose reducer, mechanical overflow safety	444.0640.0
General accessories		REF
11	Deposit tray, stainless steel with support for rail system	443.0790.0



1 REF 000.0361.0



2 REF 000.0243.0



3 REF 006.0059.0



4 REF 443.0738.0



5 REF 444.0082.0



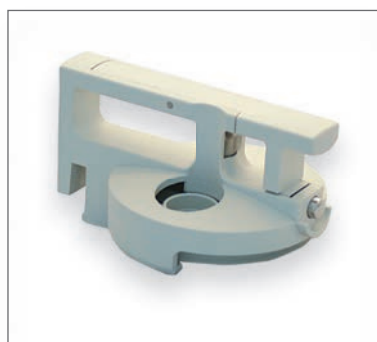
6 REF 444.0628.0



7 REF 340.0061.0



8 REF 401.0555.0



9 REF 444.0650.0



10 REF 444.0640.0



11 REF 443.0790.0



MedizinTechnik

ATMOS MedizinTechnik GmbH & Co. KG

Ludwig-Kegel-Str. 12, 14-16, 18

79853 Lenzkirch / Germany

Tel: +49 7653 689-374

ApplicationSolutions@atmosmed.de

www.atmosmed.com