

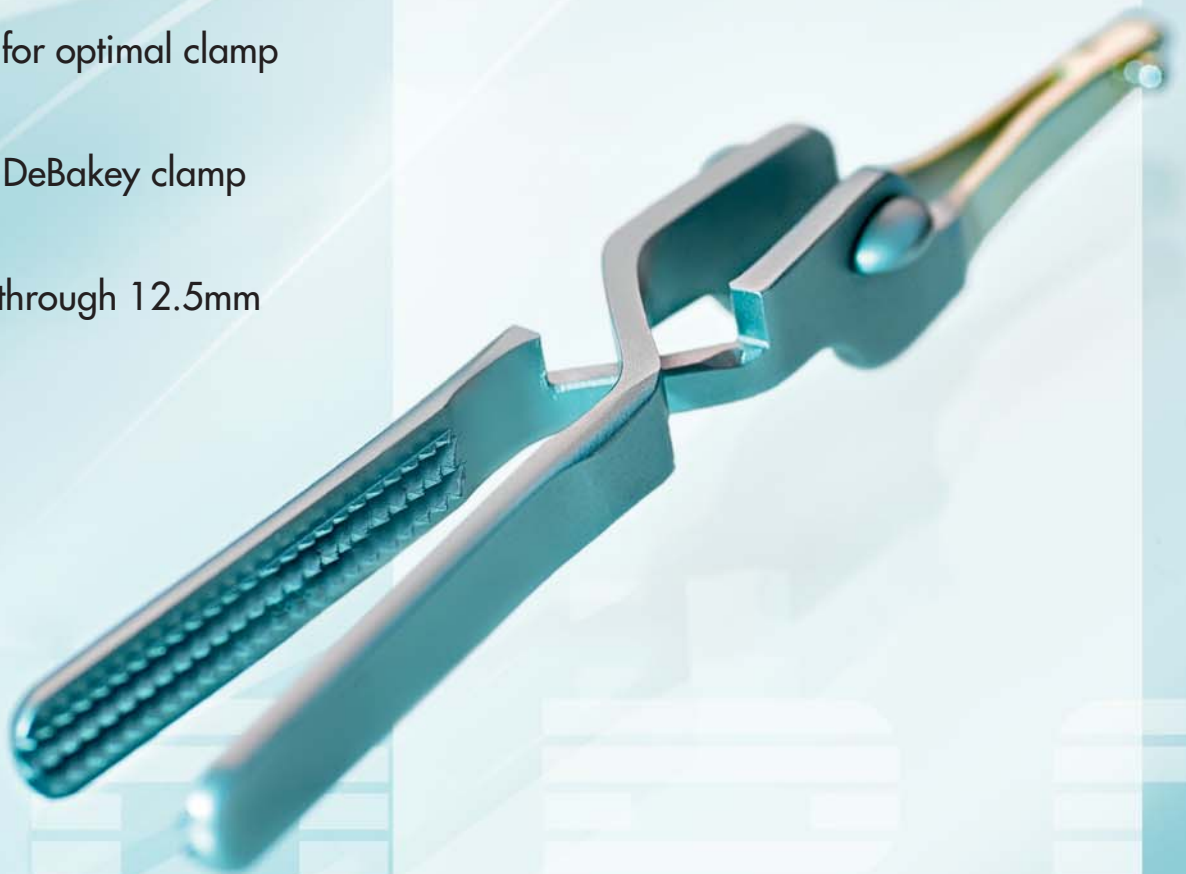
Unter Haßlen 20 · D-78532 Tuttlingen
Phone: +49 (0)7462/9470-0
Fax: +49 (0)7462/9470-50
e-mail: sales@rz-medizintechnik.com
<http://www.rz-medizintechnik.com>



RZ Medizintechnik
GmbH *Progress in Surgery*

LAPAROSCOPY ROBOTIC Bulldog Clamp

- Specifically designed for use with robotic surgical system
- Single surgeon placement via Pro-Grasp® instrument
- Full control for optimal clamp placement
- Atraumatic DeBakey clamp design
- Introduced through 12.5mm cannula

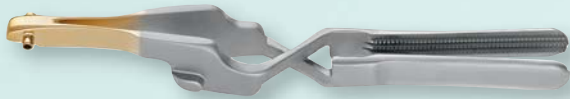


Klein™ ROBOTIC Bulldog Clamp



This Robotic Bulldog Clamp has been specifically designed with the patient in mind. With its wide 2x3 DeBakey Jaws, the clamp properly distributes the pressure along the vessel to allow for an atraumatic occlusion. The open design of the clamp allows for easy cleaning and sterilization along with a consistent

closing force, and the proximal post and suture port make retrieving the clamp effortless. Manufactured with AISI 420 Steel, RZ Medizintechnik GmbH ensures an extremely high quality and durable Bulldog Clamp.



300-100-799

Robotic Bulldog Clamp, bayonet shape,
30mm teeth, with suture hole, blunt teeth



Klein Bulldog Clamp Features

- 225g safe closing pressure
- Wide 2x3 DeBakey jaws
- Proximal and distal post
- Suture port
- Automatic alignment with ProGrasp® and Microfrance
- AISI 420 Steel
- Open design