

Using the Tristel Trio™ Wipes System for the decontamination of Transoesophageal Echocardiography (TOE) probes

Prior to commencing the decontamination process please refer to these notes.

- Disinfect hands and wear appropriate PPE when handling disinfectants and medical devices.
- Disinfect hands and change gloves after each stage of the decontamination procedure.
- Keep the used Wipes sachets next to the Quality Audit Trail Record Book so that the details can be completed at the end of the procedure.
- Discard the Wipes and gloves in accordance with hospital guidelines.
- The decontamination environment should be separated into ‘clean’ and ‘dirty’ areas.
- Place the contaminated TOE probe in the ‘dirty’ area prior to decontamination.
- Prepare for the decontamination procedure by taking one of each Wipe and the Activator Foam from the box.



PRE-CLEANING



Step 1 - Remove the Pre-Clean Wipe from the sachet, unfold and lay out in the palm of your hand.

Step 2 - Wipe the probe from ‘clean’ to ‘dirty’: start at the plug socket and work your way down to the tip. Place the probe back in the ‘dirty’ area.

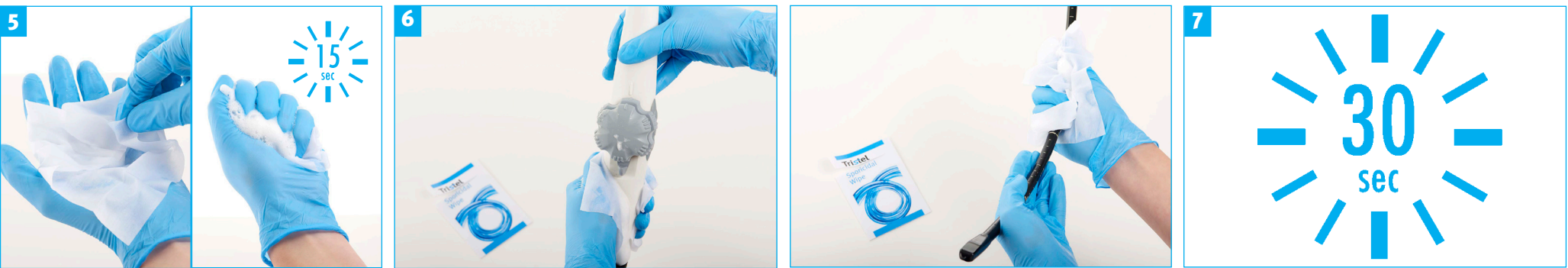
HIGH-LEVEL DISINFECTION



Step 3 - Remove the Sporidical Wipe from the sachet, unfold and lay out in the palm of your hand.

Step 4 - Apply two doses of Activator Foam onto the Wipe.
When using a 50ml Activator Foam, apply four doses of Foam.

HIGH-LEVEL DISINFECTION



Step 5 - Fold the Wipe in on itself and scrunch it for 15 seconds to generate chlorine dioxide.
Ensure that the Wipe is completely covered in Foam.

Step 6 - Wipe the probe from ‘clean’ to ‘dirty’: start at the plug socket and work your way down to the tip. Ensure that all surfaces of the probe come into contact with the Wipe at least once.

Step 7 - Place the probe in the ‘clean’ area and leave it for 30 seconds.

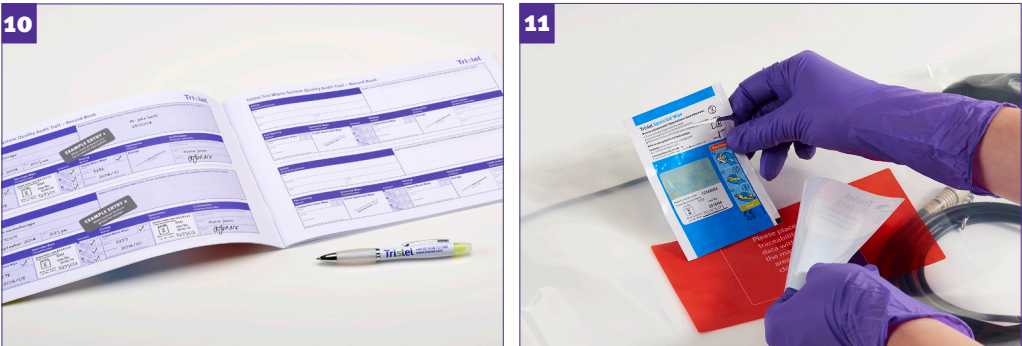
RINSING



Step 8 - Remove the Rinse Wipe from the sachet, unfold and lay out in the palm of your hand.

Step 9 - Rinse the probe to remove excess disinfectant.
Place the probe back in the ‘clean’ area.

TRACEABILITY & TRANSPORT



Step 10 - Refer to the used Wipe sachets and Activator Foam bottle to complete the Quality Audit Trail Record Book.
For more information, refer to the Quality Audit Trail Help Guide.

Step 11 - The probe is now ready for reuse or storage.
For safe transport to the patient, Tristel recommends the use of Tristel Protect.