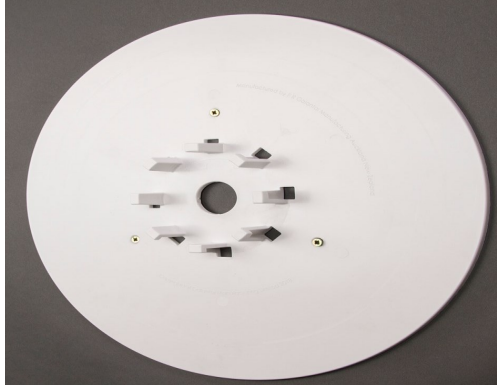
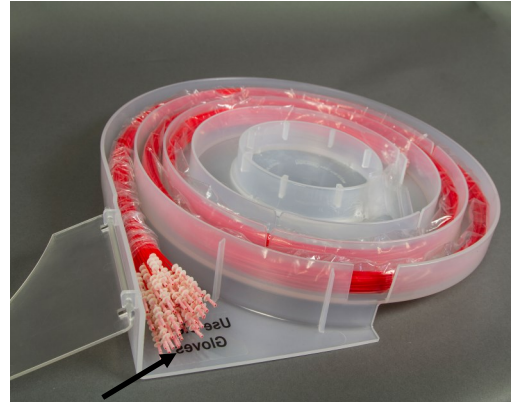


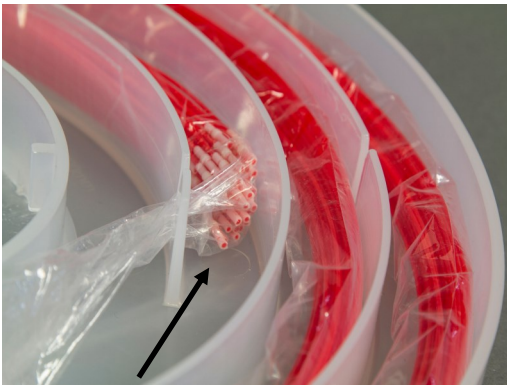
Using the New Cassette—Large Mounting Plate



1. Attach the mounting plate to the wall either using the included adhesive strips, or screws to hold the plate in place.



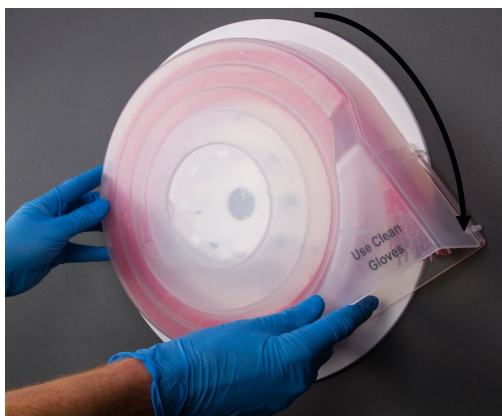
2. Position the wiper end of the refill pack at the outer end of the cassette spiral. Lay the refill pack into the spiral. Flip the plastic cover over the wipers..



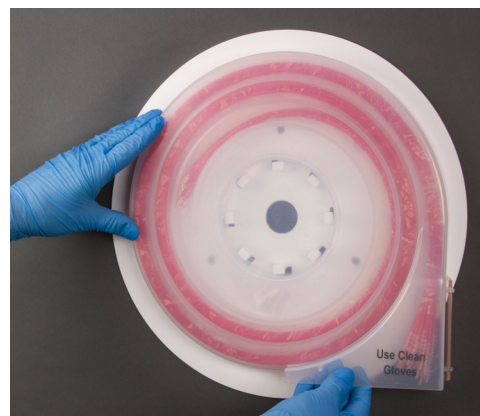
3. Insert the sealed end of the refill pack into one of the V slots. Pick the one suitable for the brush length..



4. Place the loaded cassette onto the mounting plate.



5. Turn until the cassette locks securely into place.



6. You can set the orientation of the cassette to the direction that best suits your work area.

TM