

Lid Implants

Restoration of eyelid closure after facial palsy



Quality you can rely on

30
Years
SPIGGLE & THEIS
1994 - 2024



Lid Implants



Platinum Chain

The implantation of weights in the upper eyelid was first described in 1958, and has since become an established procedure. This technology makes it possible to close the lid completely without restricting the field of vision.

To prevent postsurgical complications, SPIGGLE & THEIS Medizintechnik has developed a flexible platinum chain that can be adapted perfectly to the anatomy of the eye, thus significantly improving the patient's quality of life.



Lid Implants (Lid Chains)

Platinum/Iridium, sterile

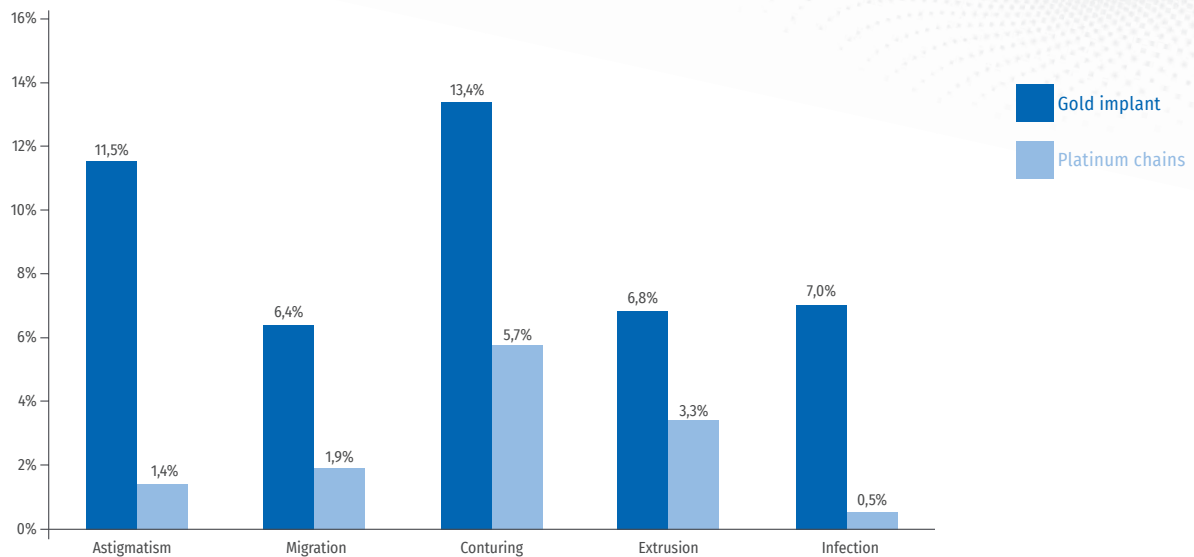
Platinum/Iridium, sterile

The Berghaus/Schrom lid chain is an implant to restore dynamic closure of the eye in cases of lagophthalmos, resulting from facial paralysis. The implants' unique design as a chain allows for an optimal and flexible adaptation to the shape of the tarsus. The pre-drilled holes are for easier fixation.

Using platinum and iridium has many advantages over the commonly used gold implants, particularly when considering weight distribution and biocompatibility. The combination of the materials and the chain design is reflected in better average results and lower rate of complications.



Comparison of post-operative complications of platinum chains and gold implants

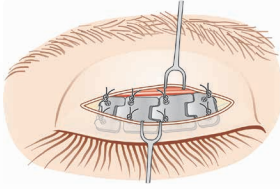


Source: Development and evaluation of a lid implant for use in the surgical correction of lagophthalmos with peripheral facial paralysis, Schrom 2005.

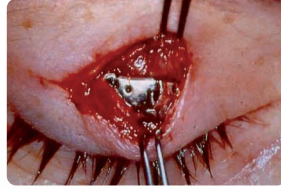
Advantages of the lid chain

Flexible lid implants

Advantages of lid loading



Schematic diagram:
Front view of an implanted
platinum chain



Frontal view

Advantages:

- Complete closure of the eyelid
- No restriction of the peripheral vision
- Visual preservation with binocular vision
- Completely and easily reversible
- Can be combined with other surgical eyelid corrective procedures

Advantages over conventional eyelid implants



Rigid gold implant



Flexible lid chain

Vorteile:

- Flexible
- Very good tissue compatibility
- Increased density (volume reduction > 10%)
- Optimal pretarsal adaption
- Reduction in post-operative complications
- Excellent cosmetic results, high patient satisfaction and quality of life

Notes on fixation of the lid chains:

Only slow or non-absorbable suture material should be used (e.g.: 6 - 0 with P3 needle). The chain is provided with several holes for pretarsal fixation. The number of fixation points should be at least 4 (0.6g), 6 (0.8g - 1.6g) or 8 (1.8g - 2.0g). Each fixation point should be sutured individually!

Lid Implants, Platinum/Iridium, sterile

- Material: Platinum/Iridium (Pt/Ir) alloy, 97% / 3%
- Single sterile packaging

Art.-No.	Weight (g)
1500-06	0.6
1500-08	0.8
1500-10	1.0
1500-12	1.2
1500-14	1.4
1500-16	1.6
1500-18	1.8
1500-20	2.0

only on request

Art.-No.	Weight (g)
1500-22	2.2



Test weights

Preoperative fitting, non-sterile

Weights are offered from 0.6 g to 2.2 g in 0.2 g increments. The appropriate weight is determined by preoperative fitting. For this

purpose, test weights are used, which are glued to the upper lid to determine a sufficient lid closure.



Test weights



Art.-No.	Description	Weight (g)	Packaging (pieces/box)
1500-PG06	test weight	0.6	1
1500-PG08	test weight	0.8	1
1500-PG10	test weight	1.0	1
1500-PG12	test weight	1.2	1
1500-PG14	test weight	1.4	1
1500-PG16	test weight	1.6	1
1500-PG18	test weight	1.8	1
1500-PG20	test weight	2.0	1
1500-PGKS	adhesive strips		50
1500-PGSET	test weight set		8
optional / not included in set:			
1500-PG22	test weight	2.2	1

© 2024 by SPIGGLE & THEIS Medizintechnik GmbH
Modification and errors - including pictures - reserved.
Please note also that not all goods might be for sale in your country.



Burghof 14 · 51491 Overath · Germany
Phone: +49 2206 90 81 - 0
Fax: +49 2206 90 81 - 13
info@spiggle-theis.com
www.spiggle-theis.com